

### CERTIFICATE OF LOCATION OF GOVERNMENT CORNER

SOUTHWEST Corner of Section 29, Township 105, Range 42, 5TH P.M.

STATE OF MINNESOTA, County of MURRAY

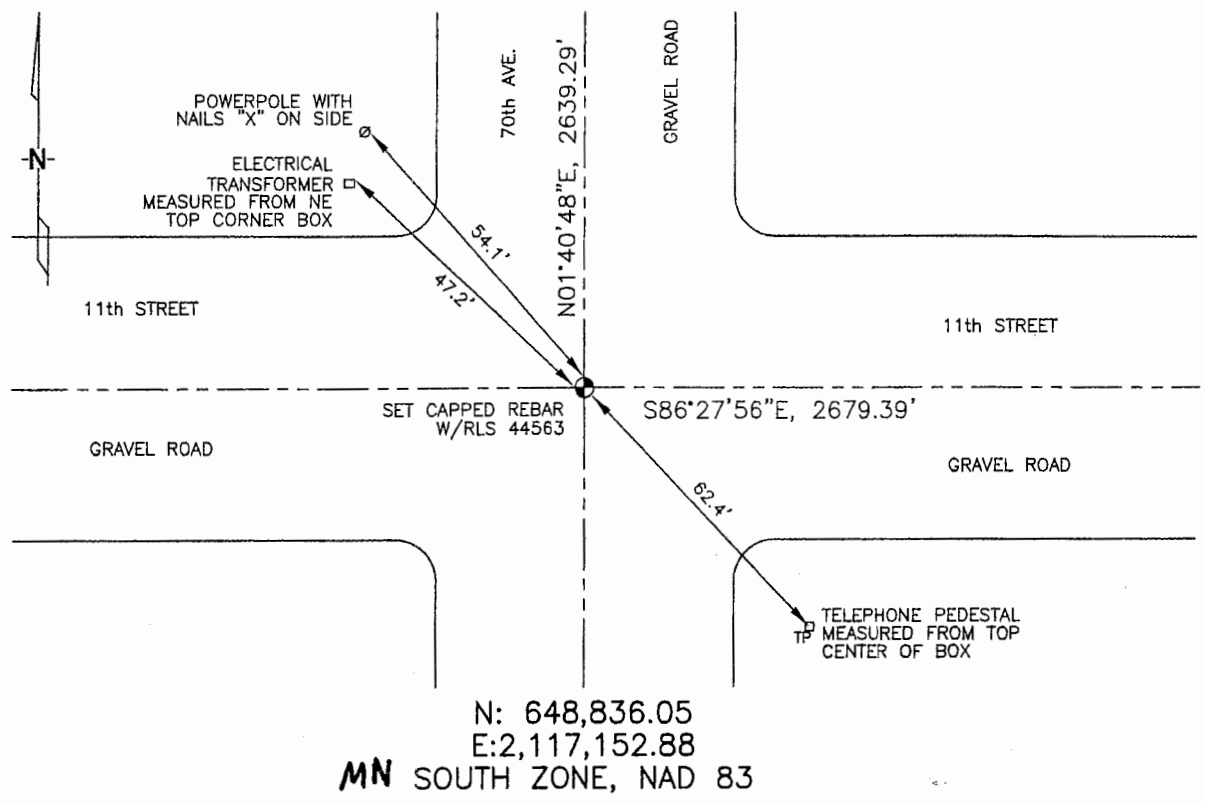
At the corner location shown on the sketch :

On \_\_\_\_\_ found \_\_\_\_\_

left monument as found,  lowered monument,  removed monument (explain)

On 3/9/2006 set 5/8" REBAR WITH CAP: RLS 44563 @  
INTERSECTION OF GRAVEL ROADS.

Sketch of reference ties



Statement of evidence relative to this corner location is on back page

I hereby certify that this document and the data contained herein was prepared by me or under my direct supervision.

Thomas V. Zeff 4/24/06  
 Thomas V. Zeff Date  
 Registration No. 44563  
 Land Surveyor,  Professional Engineer  
 County Surveyor,  County Engineer

OFFICE OF THE COUNTY RECORDER

County of \_\_\_\_\_

SEP 28 2006

I hereby certify that this document was filed in the Co. Recorders office at \_\_\_\_\_ .M. on the day of \_\_\_\_\_ A.D. , 20

County Recorder James V. Johnson  
By \_\_\_\_\_, Deputy

DOCUMENT NO. \_\_\_\_\_

STATEMENT OF EVIDENCE:

SOUTHWEST CORNER, SECTION 29, T. 105 N., R. 42 W.,  
MURRAY COUNTY, MINNESOTA

1861 D.W.Wellman & S.S.Smoot, US. Deputy Surveyors, monumented corner.

3/9/2006 Ulteig Engineers, Inc., Survey Crew, Brain Payne Party Chief, found nothing. Set a 5/8" rebar with cap: RLS 44563 @ intersection of gravel roads.

Ties: NW-54.1' to nailed "X" on side of power pole;  
NW-47.2' to top, NE corner of electrical transformer box;  
SE-62.4' to top, center, telephone pedestal;  
N-2639.29' to West 1/4 corner, Section 29;  
E-2679.39' to South 1/4 corner, Section 29;